

**RWE Renewables UK Dogger Bank
South (West) Limited**

**RWE Renewables UK Dogger Bank
South (East) Limited**

**Dogger Bank South Offshore
Wind Farms**

Cable Installation Works Restricted Area Plan

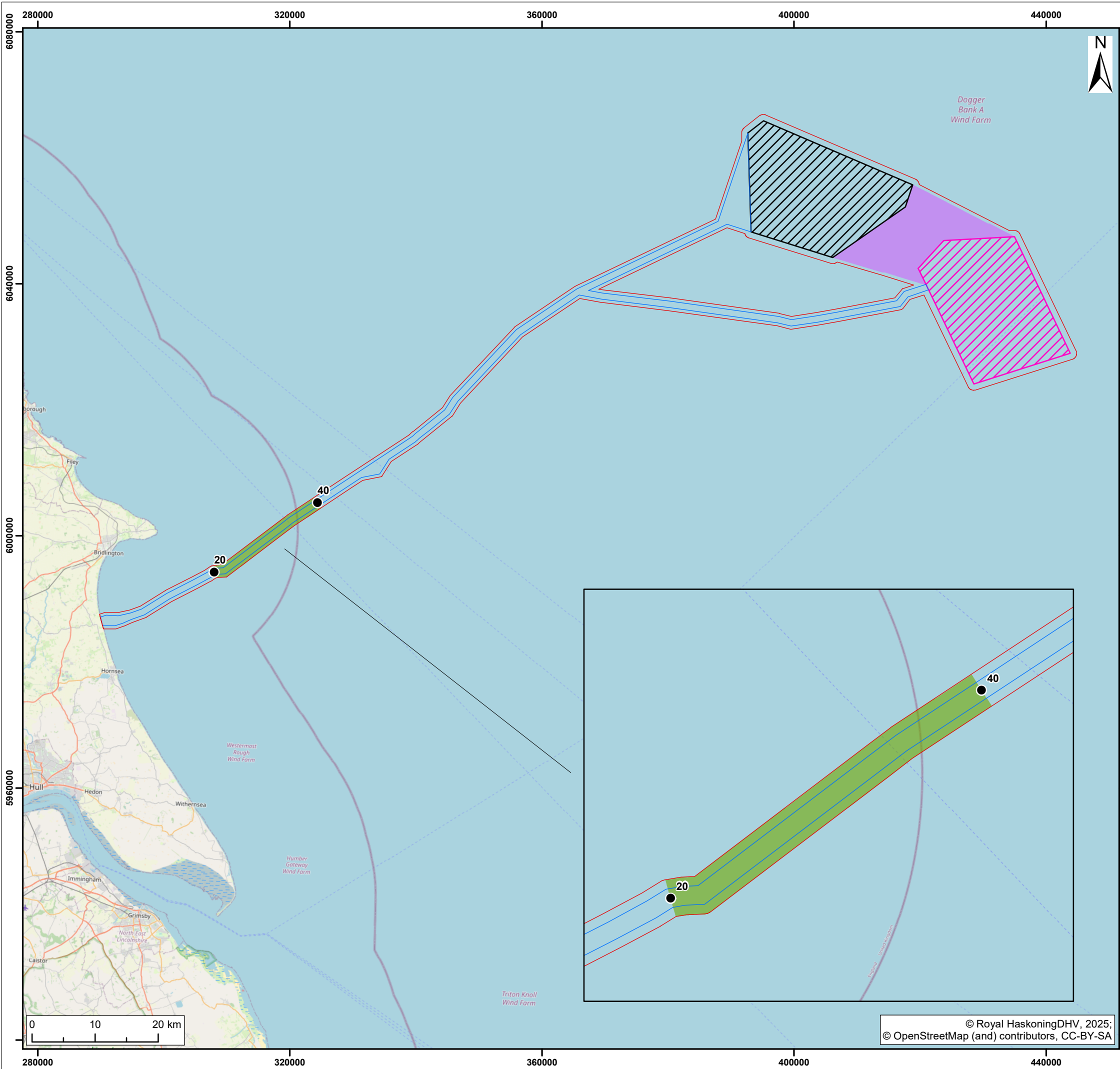
Document Date: July 2025

Document Reference: 18.5

Revision Number: 01

Classification: Unrestricted

Company:	RWE Renewables UK Dogger Bank South (West) Limited and RWE Renewables UK Dogger Bank South (East) Limited	Asset:	Development		
Project:	Dogger Bank South Offshore Wind Farms	Sub Project/Package	Consents		
Document Title or Description:	Cable Installation Works Restricted Area Plan				
Document Number:	005954531-01	Contractor Reference Number:	PC2340-RHD-OF-ZZ-DR-Z-1116		
<p><i>COPYRIGHT © RWE Renewables UK Dogger Bank South (West) Limited and RWE Renewables UK Dogger Bank South (East) Limited, 2025. All rights reserved.</i></p> <p><i>This document is supplied on and subject to the terms and conditions of the Contractual Agreement relating to this work, under which this document has been supplied, in particular:</i></p> <p>LIABILITY</p> <p><i>In preparation of this document RWE Renewables UK Dogger Bank South (West) Limited and RWE Renewables UK Dogger Bank South (East) Limited has made reasonable efforts to ensure that the content is accurate, up to date and complete for the purpose for which it was contracted. RWE Renewables UK Dogger Bank South (West) Limited and RWE Renewables UK Dogger Bank South (East) Limited makes no warranty as to the accuracy or completeness of material supplied by the client or their agent.</i></p> <p><i>Other than any liability on RWE Renewables UK Dogger Bank South (West) Limited and RWE Renewables UK Dogger Bank South (East) Limited detailed in the contracts between the parties for this work RWE Renewables UK Dogger Bank South (West) Limited and RWE Renewables UK Dogger Bank South (East) Limited shall have no liability for any loss, damage, injury, claim, expense, cost or other consequence arising as a result of use or reliance upon any information contained in or omitted from this document.</i></p> <p><i>Any persons intending to use this document should satisfy themselves as to its applicability for their intended purpose.</i></p> <p><i>The user of this document has the obligation to employ safe working practices for any activities referred to and to adopt specific practices appropriate to local conditions.</i></p>					
Rev No.	Date	Status/Reason for Issue	Author	Checked by	Approved by
01	July 2025	Submission for Deadline 8	RHDHV	RWE	RWE



- Legend:
- Offshore Development Area
 - Offshore Export Cable Corridor
 - DBS East Array Area
 - DBS West Array Area
 - Inter-platform Cabling Area
 - Offshore Export Cable Corridor Restricted Area
 - Kilometer Points (KP)

S2	P01	03/07/2025	Suitable for information	SM	RF	
SUI	REV	DATE	DESCRIPTION	DRW	CHK	APR

Title:

Cable installation works restricted area plan

Figure: 1 Drawing No: PC2340-RHD-OF-ZZ-DR-Z-1116

Co-ordinate system: WGS 1984 UTM Zone 31N Page Size: A3 Scale: 1:600,000

Project: Dogger Bank South Offshore Wind Farms Report: Cable installation works restricted area plan